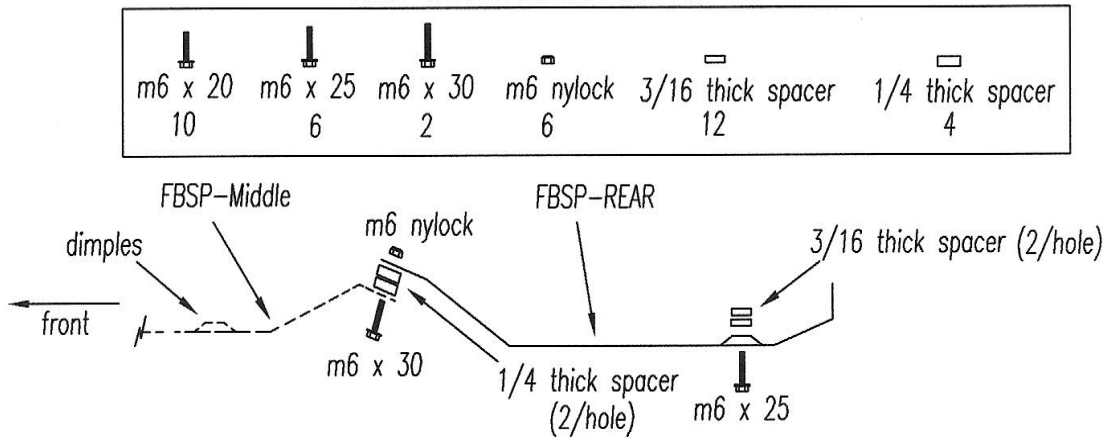


420 IRS FBSP-REAR INSTRUCTIONS

* NOTE: SIDE BENDS LEFT OUT FOR CLEARER VIEW



To make installation easier please carefully study the above drawing, it is the side view of the Rear FBSP and Middle FBSP (already installed). The Front and Middle FBSP must be installed first before attempting to install the Rear. Begin by duct taping the spacer washers in position as shown in the drawing, then place the Rear FBSP in position as shown. Install (hand tight) the bolts/nuts as shown then tighten starting with the front bolts working your way back. Do not overtighten !! Note: we use narrow strips of duct tape criss crossed over the spacer washers leaving the hole open.

THANK YOU FOR PURCHASING OUR PRODUCT

ENJOY YOUR RIDE

